

# FOR SALE

## POTENTIAL BUILDING SITE

**5.2+/-**  
**TOTAL ACRES**

### PRODUCTIVE CROPLAND

5.16+/- Tillable • 0.04+/- Roads/Waste

### LOCATED NEAR SR 9, FAIRMOUNT, INDIANA -

This single parcel of tillable land features road frontage along County Road 950 S. Ideally suited for those seeking farm investment or a building site to call home.

**LISTING PRICE: \$14,900/ACRE**



**HALDERMAN**  
REAL ESTATE & FARM MANAGEMENT



**Halderman-Harmeyer**  
Real Estate Services



Lauren Peacock  
765.546.7359  
lauren@halderman.com



Chris Peacock  
765.546.0592  
chris@halderman.com



Don Wright  
765.661.1429  
donw@halderman.com



**800.424.2324**  
**halderman.com**





PICTURED: View looking southeast.



PICTURED: View along CR 950 S

**LISTING PRICE: \$14,900/acre**

### TRACT BREAKDOWN

5.16+/- Tillable, 0.4+/- Roads/Waste

### PROPERTY LOCATION

On the south side of CR 950 S approximately one half mile east of SR 9 in Fairmount Township, Grant County

### SCHOOL DISTRICT

Madison-Grant United School Corporation

### PROPERTY TYPE

Building Site, Farm Residential

### ZONING

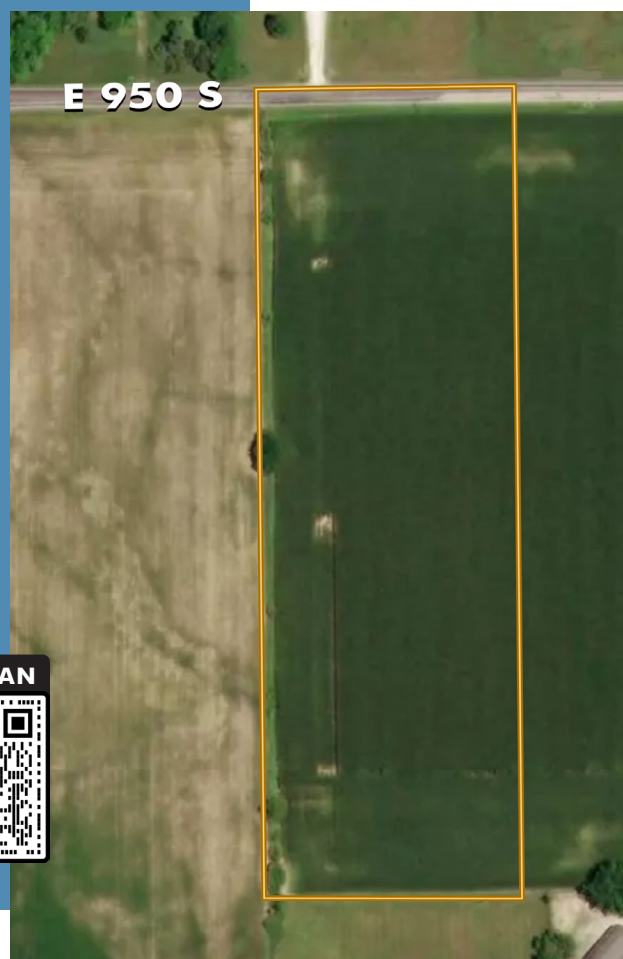
R-1

### TOPOGRAPHY

Level to Gently Rolling

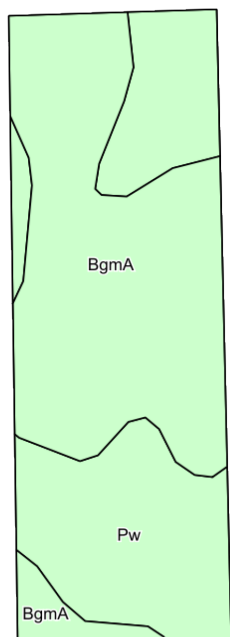
### ANNUAL TAXES

\$196.52



### VIEW DRONE FLIGHT, PHOTOS AND MORE!

Access additional photos, drone footage, and further details about this property.



KEY	SOIL DESCRIPTION	ACRES	CORN	SOYBEANS
BgmA	Blount silt loam, ground moraine, 0 to 2 percent slopes	3.04	141	45
Pw	Pewamo silty clay loam, 0 to 1 percent slopes	2.12	157	47
<b>WEIGHTED AVERAGE (WAPI)</b>			<b>147.6</b>	<b>45.8</b>

**HLS# LAP-13129 (25)**

Additional information including photos and a drone flight are available at [halderman.com](http://halderman.com).

