

# 1,000,000 GRAIN STORAGE SETUP

# FOR SALE

## LISTING PRICE

\$3,900,000

## PROPERTY LOCATION

6210 Cole Road, Hillsdale, MI 49242  
East of M 49 at the intersection of  
Cole Rd and Cronk Rd S in Hillsdale  
County, Reading/Allen Township

## BUILDINGS (TRACT 1)

**85' x 300' Machinery Shop**

**80' x 60' Machinery Shop**  
with living quarters attached  
featuring:

- 4 Bedrooms
- 1 Bath
- Large Office
- Conference Room
- Kitchen

## 1,000,000 bu Grain Storage Facilities:

Meyer 2650s Tower Grain Dryer  
with 1105 operating hours,  
Meyers SQ40 Grain Dryer with  
2,672 operating hours

**1,750 sq ft Home (TRACT 2)**

## ZONING

Agricultural

## SCHOOL DISTRICT

Reading Community Schools

## TOPOGRAPHY

Level to Gently Rolling

## ANNUAL TAXES

\$15,424.30

**FARM: Cole Road Farm**

**HLS# GCJ-12698 (21)**

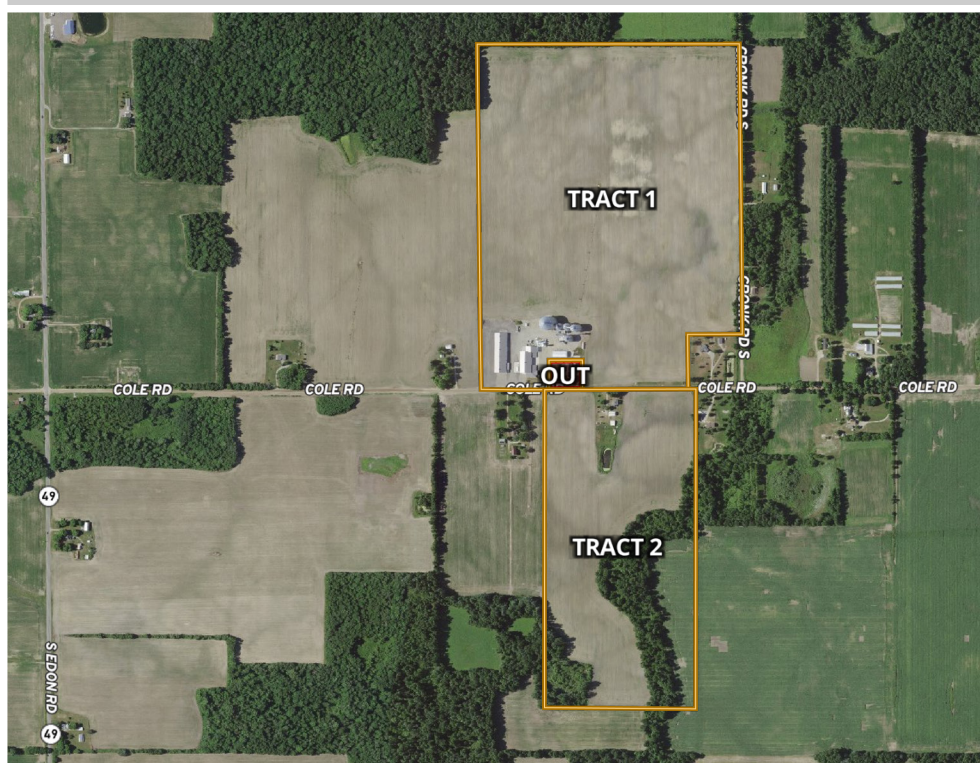
# 181.64<sup>+/-</sup> total acres

**Tract 1: 114.68<sup>+/-</sup> acres**

104.33<sup>+/-</sup> Tillable | 8.25<sup>+/-</sup> Home

**Tract 2: 66.96<sup>+/-</sup> acres**

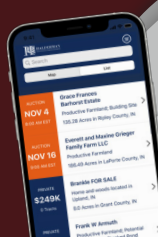
46.58<sup>+/-</sup> Tillable | 20.13<sup>+/-</sup> Woods



**Grover Johnson**  
614.753.9697  
groverj@halderman.com



**Colten Yager**  
620.214.1915  
colteny@halderman.com



**DOWNLOAD THE HALDERMAN APP**

Instant directions to  
property tracts and  
details on this listing.

Download on the  
App Store

GET IT ON  
Google Play



**HALDERMAN**  
REAL ESTATE & FARM MANAGEMENT

800.424.2324 | halderman.com





# FOR SALE

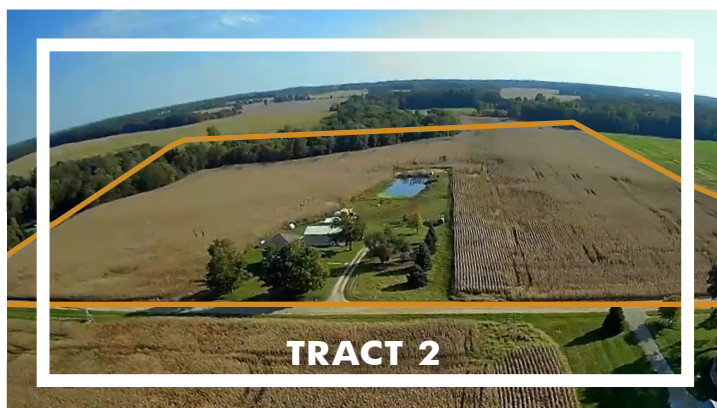


**181.64<sup>±</sup> total acres**

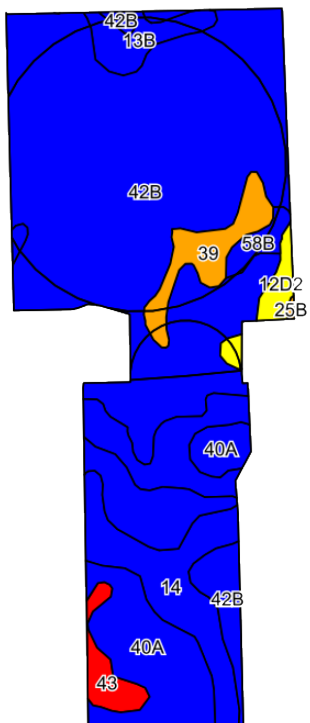
## PRODUCTIVE FARMLAND • GRAIN/EQUIPMENT STORAGE



## 1,000,000 bu Grain Storage



## 66.96<sup>+/-</sup> Total Acres & Home



SOIL DESCRIPTION		ACRES	CORN	SOYBEANS
42B	Riddles sandy loam, 1 to 6 percent slopes	97.82	143	49
40A	Locke fine sandy loam, 0 to 3 percent slopes	25.45	105	36
14	Wolcott silt loam	22.13	150	53
39	Gilford sandy loam, till plan, 0 to 2 percent slopes	6.37	146	33
13B	Conover loam, 1 to 4 percent slopes	4.71	120	36
43	Histosols and Aquents, ponded	3.38	---	---
12D2	Wawasee clay loam, 12 to 18 percent slopes eroded	2.72	110	51
58B	Wawasee clay loam, 12 to 18 percent slopes,	2.10	90	38
25B	Thatford loamy sand, 0 to 4 percent slopes	0.15	85	35
WEIGHTED AVERAGE (WAPI)			133.3	45.1