

2 AUCTIONS

SEPTEMBER 14th | 6:30 p.m. EST

MONROE TOWNSHIP | CARROLL COUNTY

316.34^{+/-} acres combined

Featuring:
Excellent maintained
rural home with
acreage.
See inside for
details.



AUCTION LOCATION | 102 N. FOURTH STREET- FLORA, IN 46929

AUCTION 1 PROPERTY LOCATION | ON THE SOUTH SIDE OF CR 50 S AT THE INTERSECTION OF 100 E

AUCTION 2 PROPERTY LOCATION | ON THE SOUTHSIDE OF CR 50 S AND WEST SIDE OF 200 E

OPEN HOUSES | AUGUST 27 AND SEPTEMBER 2 FROM 4-6 PM

*COVID-19 SAFETY DETAILS CAN BE VIEWED AT WWW.HALDERMAN.COM

OWNER: Myer Farm & David and Amy Myer

HLS# AJJ-12527 (20)

Terms and Conditions can be viewed at www.halderman.com

AUCTION CONDUCTED BY: RUSSELL D. HARMEYER, IN
Auct. Lic. #AU10000277, HRES IN Lic. #AC69200019



2 AUCTIONS

SEPTEMBER 14th | 6:30 p.m. EST

OPEN HOUSES

August 27 and
September 2
4-6pm



AJ Jordan
Peru, IN
317.697.3086
ajj@halderman.com



Larry Jordan
Peru, IN
765.473.5849
lj@halderman.com

HOME | 2 Tracts



128^{+/-}
total acres

HOME | 3 Tracts



188.34^{+/-}
total acres

AUCTION LOCATION

Carroll County Event & Education Center
102 N Fourth Street - Flora, IN 46929



HALDERMAN
REAL ESTATE & FARM MANAGEMENT

800.424.2324 | www.halderman.com

SINGLE STORY BRICK HOME

3 bed 2 1/2 bath with entry way, kitchen, dining room, family room, office and master suite. Plus, attached 2 car garage, partial basement with electric water heater and forced air gas furnace with CA.



Tract 2 - 20.07+/- Total Acres
7.8+/- Tillable Acres, 12+/- Home Acres with pond

AUCTION 1



Tract 1 - 107.93+/- Total Acres
107+/- Tillable Acres

PROPERTY LOCATION

On the south side of CR 50 S
at the intersection of 100 E

1 mile southeast of Flora, IN

ZONING

Agricultural

SCHOOL DISTRICT

Carroll Consolidated
Schools

TOPOGRAPHY

Level to Gently
Rolling

ANNUAL TAXES

\$3,707.96

**DITCH
ASSESSMENT**

\$231.64

AUCTION 2



Tract 1
128+/- Total Acres
123.56+/- Tillable Acres



Tract 2
1.2+/- Home Acres
1,808 sq. ft. 1 1/2 Story Home

**QUALITY
FARMLAND**



Tract 3
59.14+/- Total Acres
58.6+/- Tillable Acres

PROPERTY LOCATION

On the south side of CR 50 S
and west side of 200 E

ZONING

Agricultural

TOPOGRAPHY

Level to Gently Rolling

SCHOOL DISTRICT

Carroll Consolidated Schools

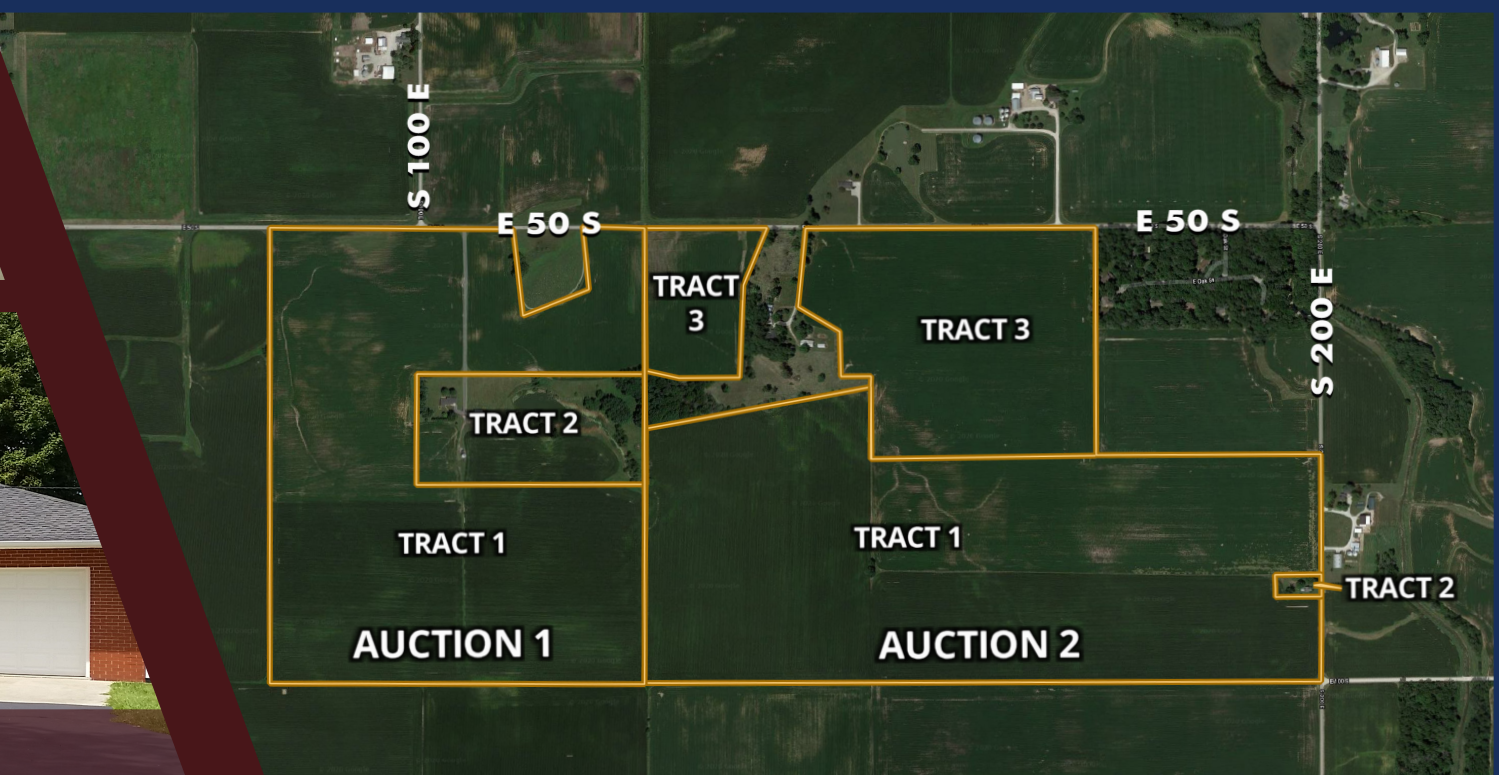
ANNUAL TAXES

\$5,775.46*

DITCH ASSESSMENT

\$331.80

*Taxes include house and 11.66 acres
which are not a part of auction.



PLACE BID

ONLINE BIDDING is a safe alternative to place a bid. Be sure to register prior to auction. For more information including additional photos, visit halderman.com.