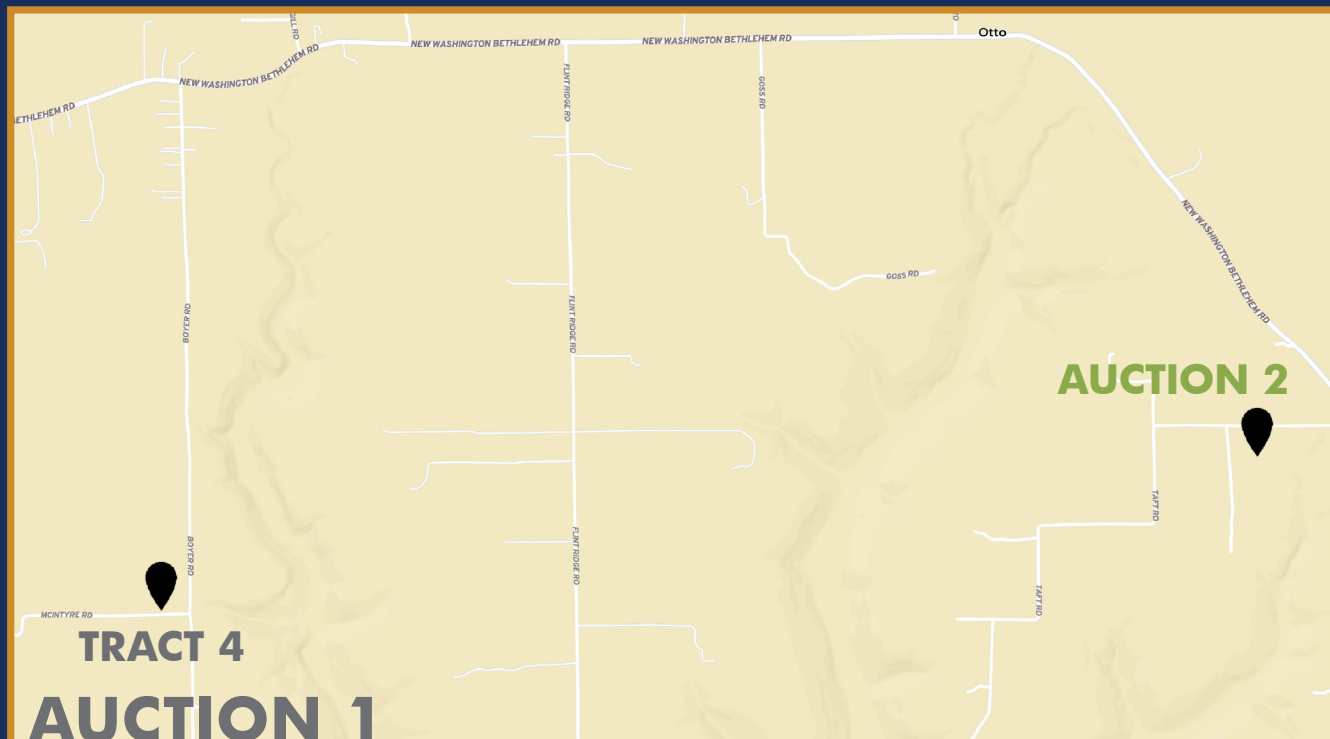




TRACT 1-3

AUCTION 1

TRACT 1-3 | SOUTHWEST CORNER OF HWY 362 AND ROBINSON ROAD



TRACT 4

AUCTION 1

4 | NORTHWEST CORNER OF MCINTYRE ROAD AND BOYER ROAD

AUCTION 2

2730 TAFT ROAD - NEW WASHINGTON, IN

LOCATION MAP

HALDERMAN
REAL ESTATE & FARM MANAGEMENT
PO Box 297 • Wabash, IN 46992

Clark County

2 ONLINE AUCTIONS
halderman.com

BIDDING OPENS: August 31st, 8 am EST
BIDDING CLOSSES: September 1st, 6 pm EST

311.88+/- total acres

Secluded setting with fenced pasture, barns and room to grow!

Plus, 4 additional tracts of tillable and wooded acreage.

See details inside.

OPEN HOUSES

August 11 | 5 pm - 6:30 pm EST
August 16 | 3 pm - 4 pm EST

Michael Bonnell: 812.343.6036 | Dave Bonnell: 812.343.4313 | Karen McCartin Foster: 502.552.0411
(AUCTION 2 ONLY)

*COVID-19 SAFETY DETAILS CAN BE VIEWED AT WWW.HALDERMAN.COM



Terms and Conditions can be viewed at www.halderman.com

Clark County

2 ONLINE AUCTIONS
halderman.com

BIDDING OPENS: August 31st, 8 am EST
BIDDING CLOSSES: September 1st, 6 pm EST

OPEN HOUSES

August 11 | 5 pm - 6:30 pm EST AND August 16 | 3 pm - 4 pm EST

269.88+/- acres
WOODED & TILLABLE ACRES



42+/- acres
HOME | POLE & FRAME BARN



Co-listed Auction 2

OWNER: Hostetler
HALDERMAN
REAL ESTATE & FARM MANAGEMENT
800.424.2324 | www.halderman.com

HLS# MDB-12522 (20)

Michael Bonnell
812.343.6036
michaelb@halderman.com

Dave Bonnell
812.343.4313
daveb@halderman.com



BERKSHIRE HATHAWAY
HomeServices
Parks & Weisberg, Realtors®
Karen McCartin Foster
502.552.0411

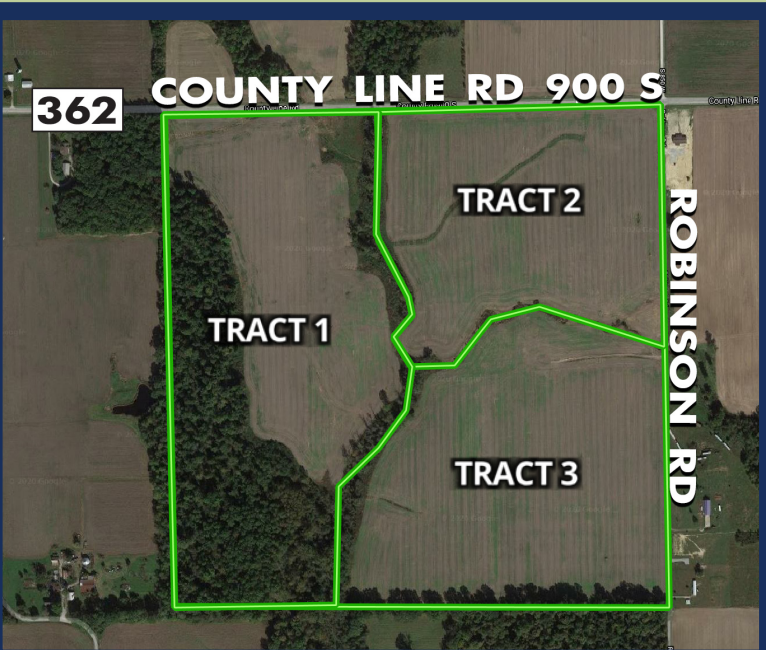
AUCTION 1 - 4 TRACTS

- 1 | 69+/- Acres

35.28+/- Tillable Acres
33.13+/- Wooded Acres
- 2 | 40+/- Acres

38.27+/- Tillable Acres
1+/- Acres of Road
- 3 | 51+/- Acres

49.49+/- Tillable Acres
0.25+/- Acres of Roads



PRODUCTIVE
FARMLAND

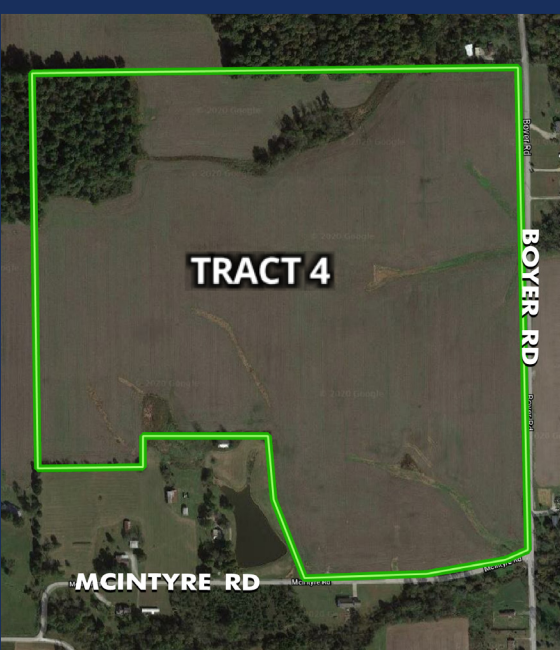


WASHINGTON TOWNSHIP | CLARK COUNTY

- 4 | 109.88+/- Acres

94.8+/- Tillable Acres
13.54+/- Wooded Acres

LOCATION
On the north side of McIntyre Road approximately 3 miles southeast of New Washington.



LOCATION
On the south side of State Highway 362, approximately 3 miles north of New Washington.

SCHOOL DISTRICT
Greater Clark County Schools

TOPOGRAPHY
Gently Rolling to Rolling



- 42+/- Acres

12.06+/- Tillable Acres
27.19+/- Acres of Wooded Pasture



1 STORY RANCH STYLE HOME
3 br 2 bath with over 2,100 sq. ft. Home includes kitchen with custom built walnut cabinets and walnut floors. Includes dining room, utility room, central air conditioning, electric heat pump, lp gas fireplace and rural water.



36' x 46' Detached garage with concrete floors and two overhead doors.

60' x 70' Pole barn with painted metal siding & roof. Barn has electric, partial hay loft and gravel floor.

45' x 100' Frame barn with concrete and gravel floors

LOCATION
2730 Taft Road
New Washington, IN 47162

SCHOOL DISTRICT
Greater Clark County Schools

BETHLEHEM TOWNSHIP | CLARK COUNTY



PLACE BID TO PLACE A BID, visit halderman.com and be sure to register prior to the auction date if you are new to the online bidding platform. More information including additional photos are also available.