

# FOR SALE

**39 +/- | Hancock County**  
**Acres | Green Twp**

# PRODUCTIVE LAND

## Location:

**This fertile farmland is on Indiana State Road 234, 3/4 mile west of Eden, Indiana.**

## Land:

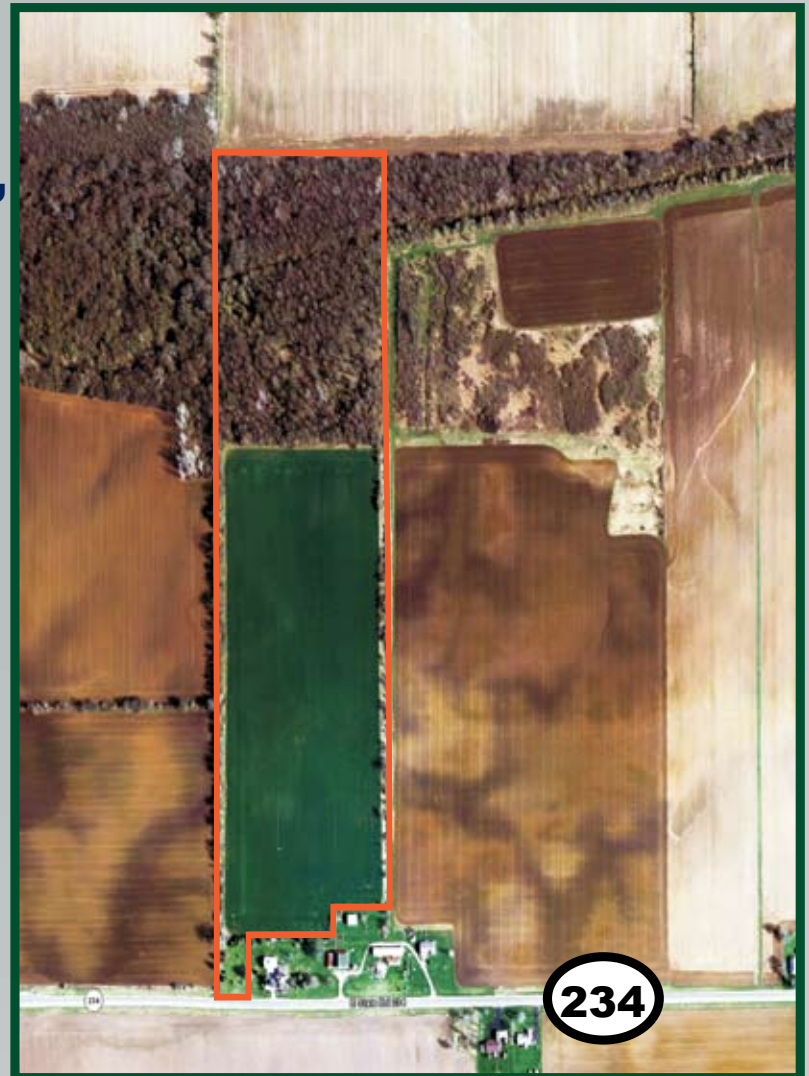
**39.25 Total Acres (25 tillable, 15 Woods) productive, gently rolling farmland. 115 feet of State Road 234 frontage. Miami silt loam, Crosby silt loam & Brookston silty clay loam soils. See soils map on reverse side.**

## Taxes:

**\$571.40**

## Price:

**\$175,000.**



## CONTACT:

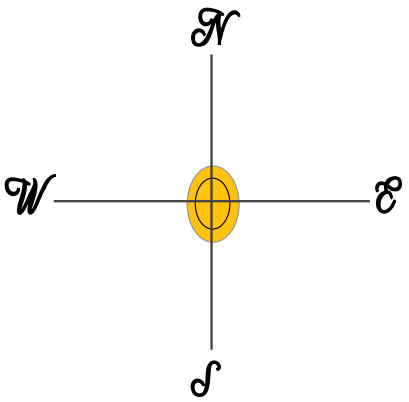
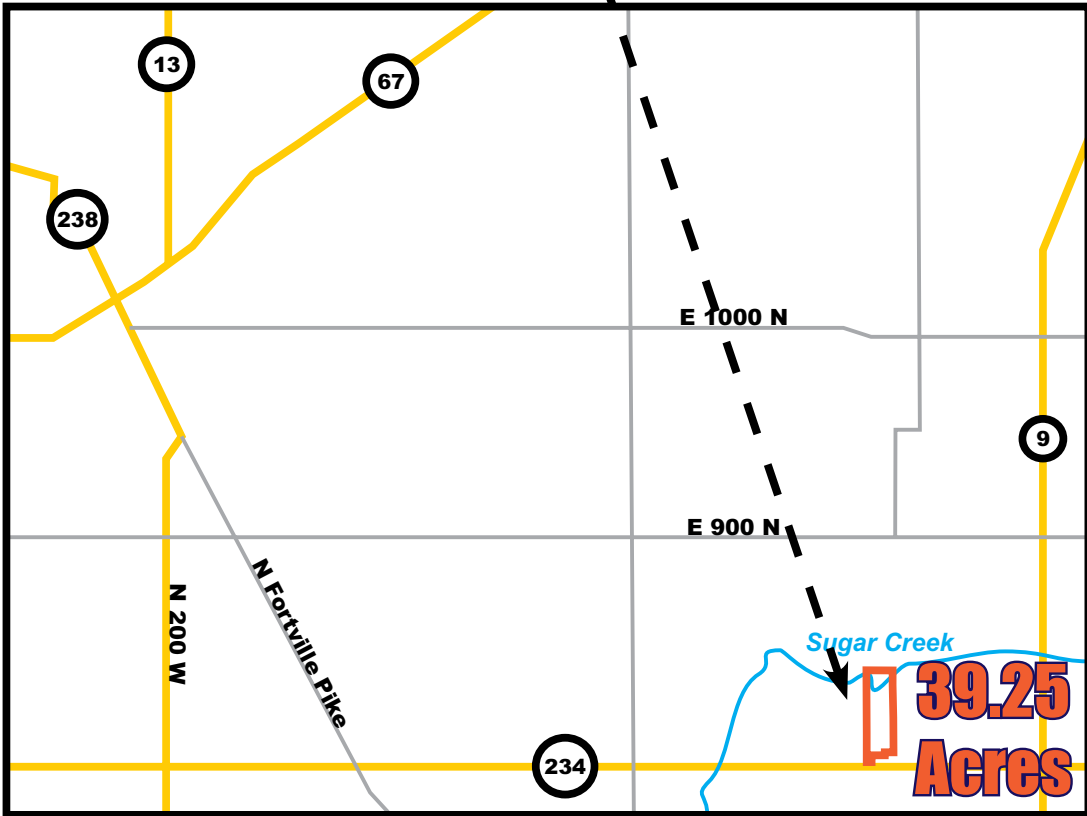
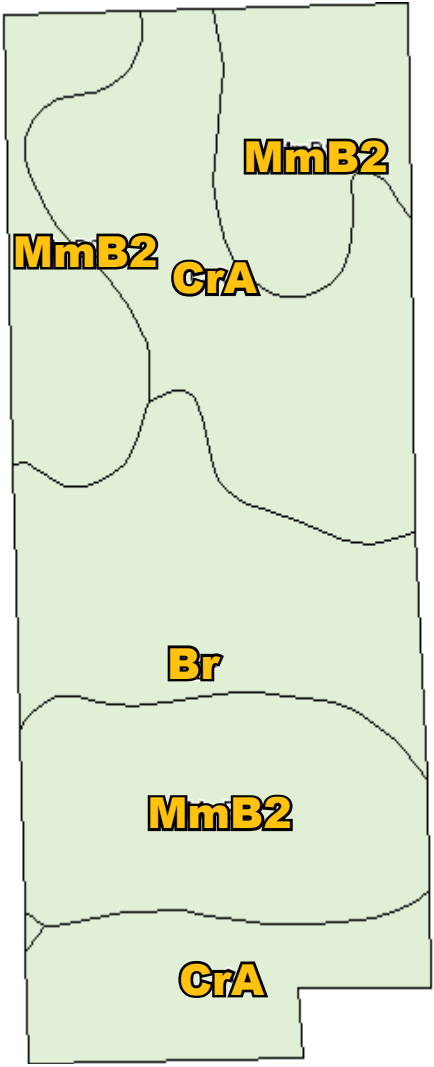
**BRETT SALYERS:**

**317.345.4745**

**BRETTS@HALDERMAN.COM**

**JOHN MINER: 765.628.7278**

Code	Soil Description Soils data provided by USDA & NRCS as of May 23, 2008	Acres	Percent of field	Corn	Pasture	Soybeans	Winter wheat
MmB2	Miami silt loam, 2 to 6 percent slopes, eroded	10	42.3%	105	7	37	47
CrA	Crosby silt loam, 0 to 3 percent slopes	8.6	36.1%	105	7	37	47
Br	Brookston silty clay loam	5.1	21.6%	145	9.6	51	58
<b>Weighted Average</b>				<b>113.6</b>	<b>7.6</b>	<b>40</b>	<b>49.4</b>



**Brett Salyers**  
317.345.4745  
bretts@halderman.com



**Halderman Real Estate**  
"Specialists in Farm Real Estate  
& Farm Management Since 1930"



**John Miner**  
765.268.7278